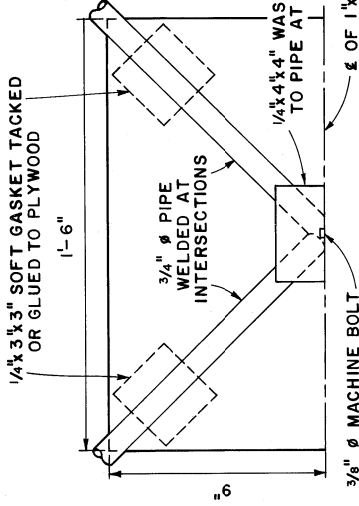


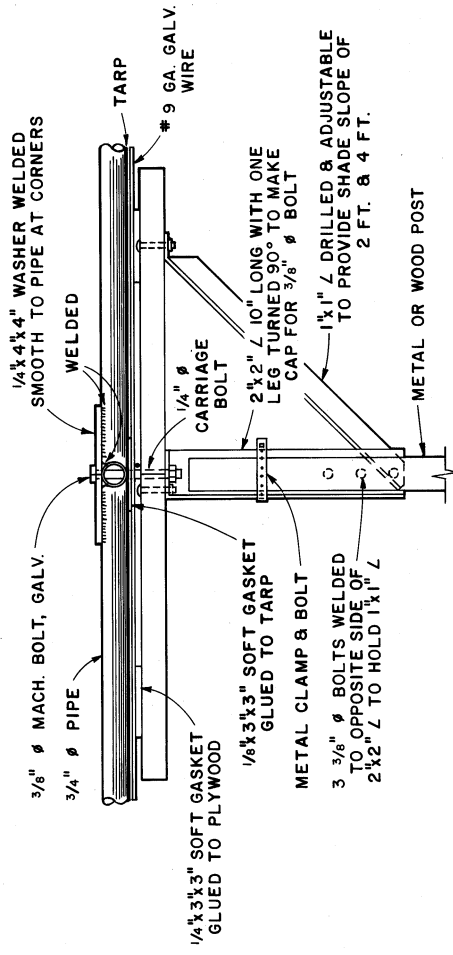
ERECTION

ASSEMBLE FRAME, TARP & #9 GA. WIRE 2'-0"x16'-0" GRID. LOCATE (±1") POSTS & SET FOR DESIRED SLOPE OF TARP. LOOSELY CLAMP CAPS ON POSTS. SET TARP & FRAME ON CAPS. BOLT PIPE FRAME TO CAPS. THEN PULL CAP DOWN ON POST & TIGHTEN CLAMP. CHECK TARP DIMENSIONS UNDER TENSION WHILE WARM BEFORE WELDING FIRST EXPERIMENTAL FRAME TO 16'-6". LEAVE NO SHARP KINKS IN NO. 9 WIRE GRID TO INJURE TARP.



NOTE:
REMOVE ALL
BURRS & SHARP
EDGES ON TOP
SIDE OF PLYWOOD
& PIPE WELDS.

HALF PLAN - PLYWOOD



SECTION A-A

SCALE
UNLESS
OTHERWISE NOTED

6" 5" 4" 3" 2" 1" 0

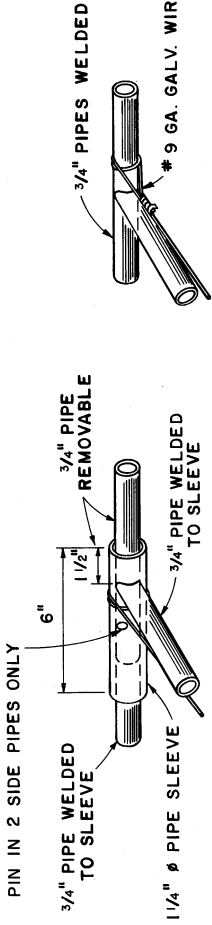
COOPERATIVE EXTENSION WORK IN
AGRICULTURE AND HOME ECONOMICS
STATE OF TENNESSEE
UNIVERSITY OF TENNESSEE
AND
UNITED STATES DEPARTMENT OF AGRICULTURE COOPERATING

TARP HOG SHADE

USDA '76

6257

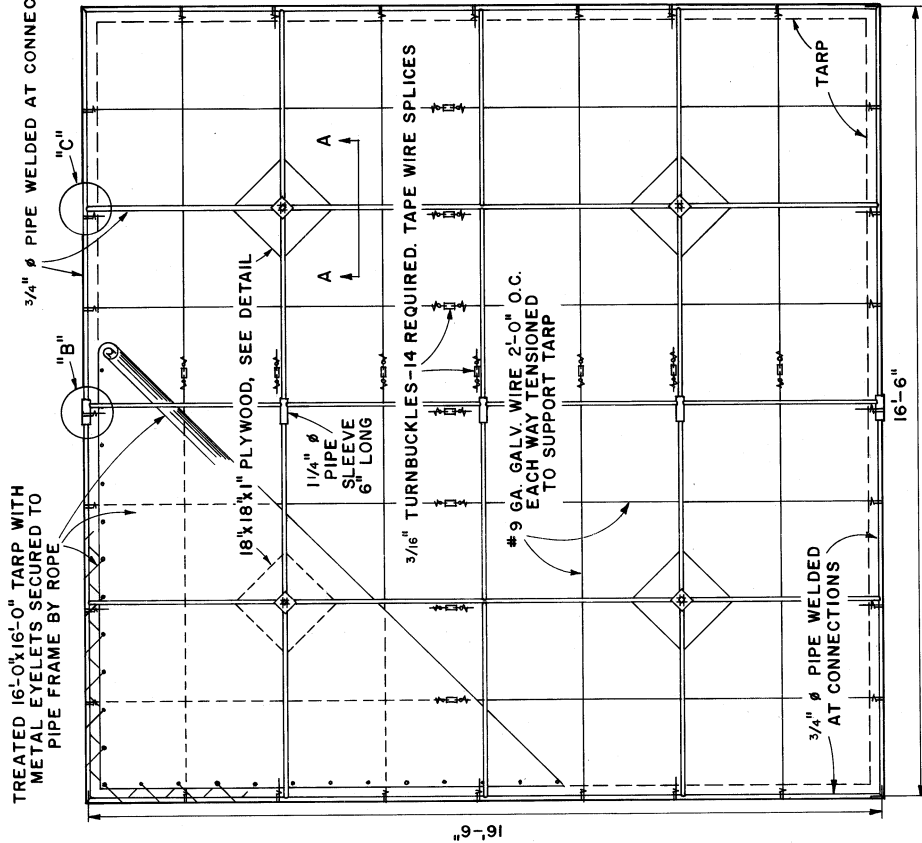
SHEET 1 OF 1



DETAIL "B"

DETAIL "C"

ISOMETRIC VIEWS



PLAN OF FRAME

12" 6" 0 1' 2"