

**PLAN**

**SECTION**

**NOTES :**

1. SLOPE ENTIRE BUILDING 1/4" PER FT (30" PER 120')
2. ADEQUATE AND PROPER VENTILATION IS ESSENTIAL FOR THE SUCCESSFUL OPERATION OF ENCLOSED SWINE BUILDINGS.
3. SELECT A COMPLETE VENTILATION SYSTEM BEFORE STARTING CONSTRUCTION. SEE PLAN NO. T4121 FOR SUGGESTED NURSERY VENTILATION PLAN. SEE PLAN NO. T4123 FOR SUGGESTED FARROWING HOUSE VENTILATION PLAN.
4. DO NOT CONSTRUCT A CURTAIN WALL FARROWING HOUSE WITHOUT A CENTRAL HEATING SYSTEM.

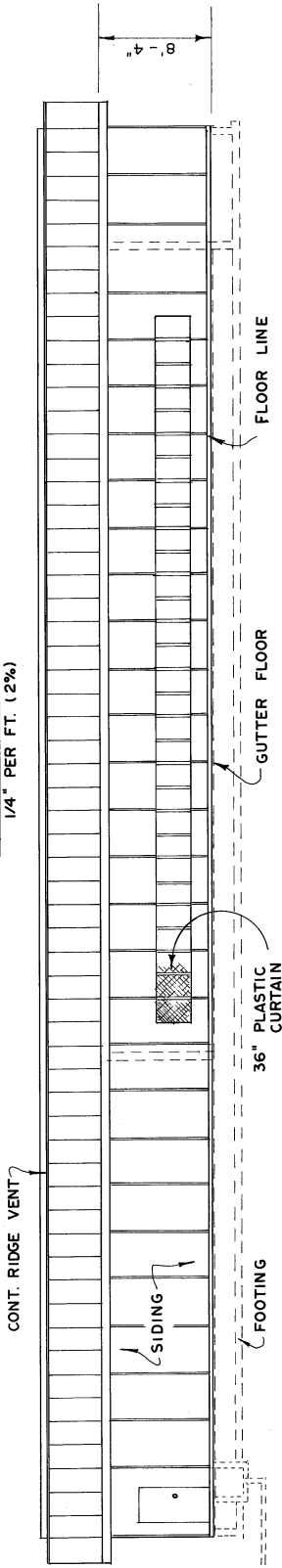
COOPERATIVE EXTENSION WORK IN  
AGRICULTURE AND HOME ECONOMICS  
STATE OF TENNESSEE  
UNIVERSITY OF TENNESSEE  
AGRICULTURAL ENGINEERING DEPARTMENT  
UNITED STATES DEPARTMENT OF AGRICULTURE COOPERATING

ENCLOSED FLUSH FARROWING  
HOUSE AND CAGE NURSERY

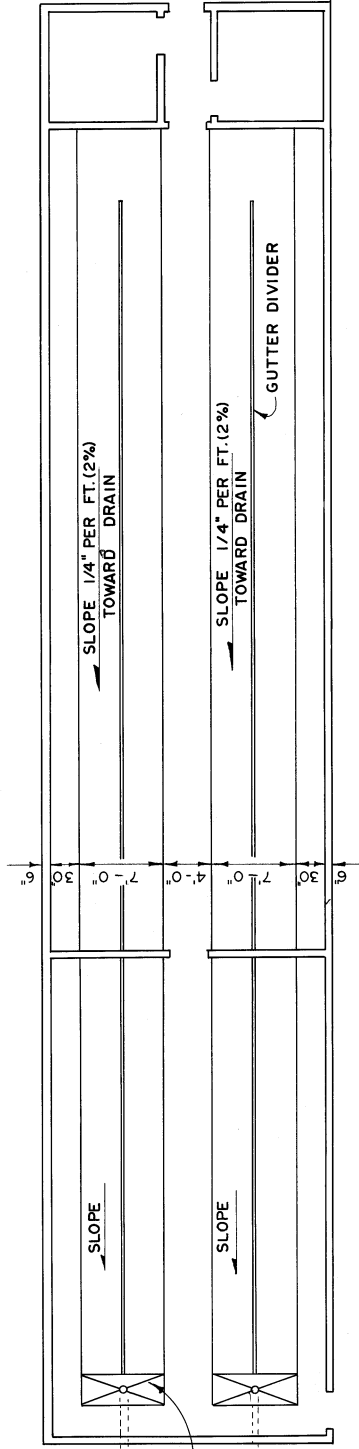
TENN. 26 - OCT - 87 SHEET 1 OF 3  
GFG / PL PLAN NO. T4066



SLOPE ENTIRE BUILDING  
1/4" PER FT. (2%)



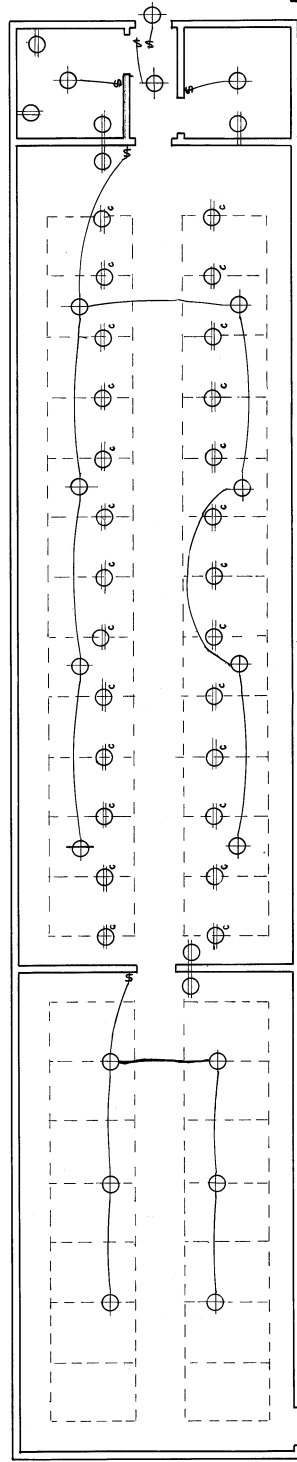
SOUTH ELEVATION



NOTE:  
ENTIRE BUILDING SHALL SLOPE  
1/4" PER FT. (2%) WITH GUTTER.

FLUSH GUTTER DETAIL

NOTE:  
GUTTER WIDTH SHOULD MATCH  
EQUIPMENT DIMENSIONS.  
VERIFY BEFORE STARTING  
CONSTRUCTION.



§ TOGGLE SWITCH ; SPST ; 20AMP ; 120 VOLT

⊕ CEILING MOUNTED LIGHT

⊕ DUPLEX RECEPTACLE ; 20 AMP ; 120 VOLT

⊕ SAME AS ABOVE EXCEPT CEILING MOUNTED

WIRING DIAGRAM  
( EXCLUDING VENTILATION )