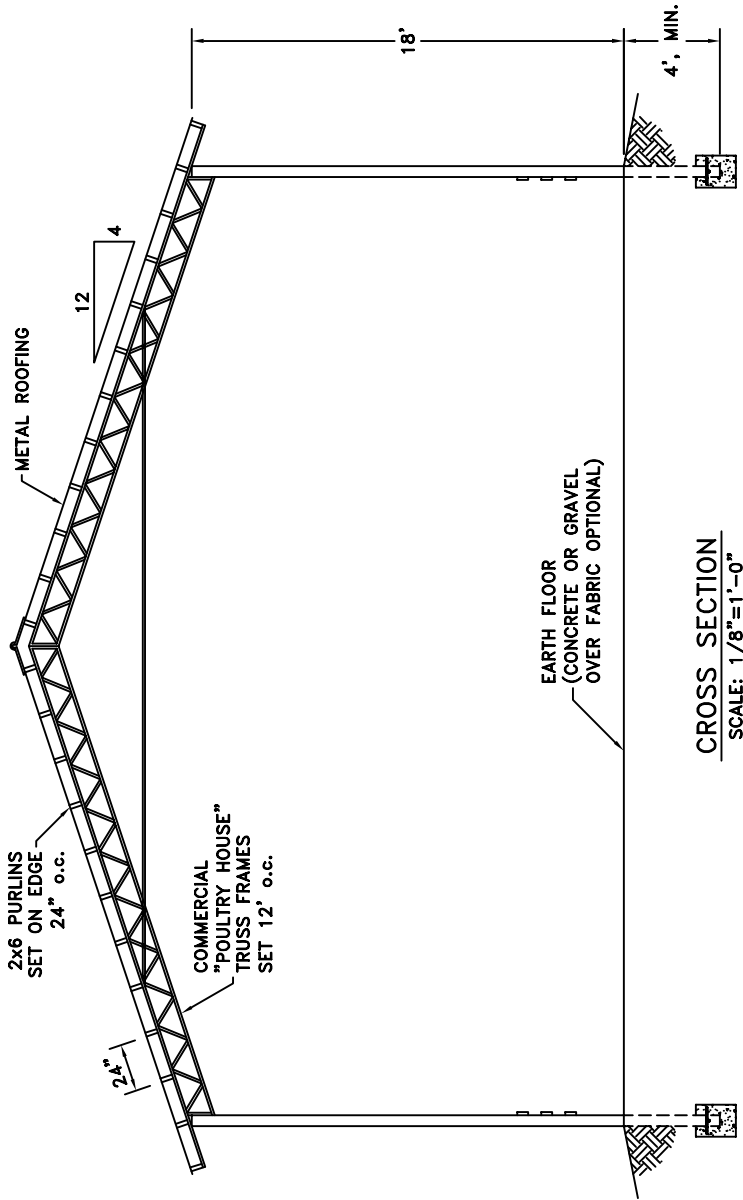


BARN CAPACITY IS
APPROXIMATELY 306
5'-0" x 5'-0" BALES
(17 STACKS OF 18
BALES PER STACK)

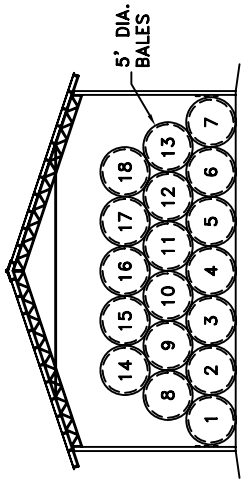
PLAN

SCALE: 3/64"=1'-0"



CROSS SECTION

SCALE: 1/8"=1'-0"



BALE STACKING DIAGRAM

SCALE: 3/64"=1'-0"

POST FOUNDATION DETAIL

SCALE: 3/8"=1'-0"

COOPERATIVE EXTENSION WORK IN AGRICULTURE AND HOME ECONOMICS			
STATE OF TENNESSEE			
THE UNIVERSITY OF TENNESSEE			
INDUSTRIAL ENGINEERING & SOIL SCIENCE DEPARTMENT			
UNITED STATES DEPARTMENT OF AGRICULTURE COOPERATING			
40' x 96' HAY STORAGE BARN WITH METAL TRUSSES			
TENN	04-DEC-2006	SHEET 1 OF 1	PLAN NO. T4183(DRAFT)
GFG			