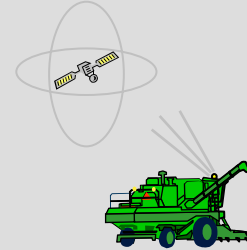


Creating A Map in ArcPad

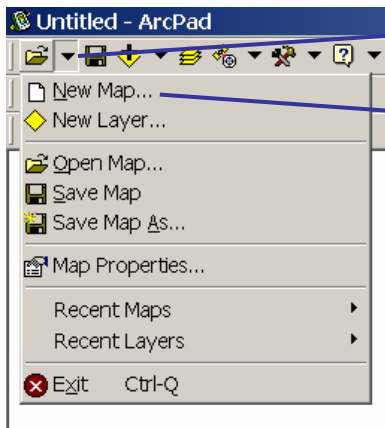
Michael J. Buschermohle, Professor
Biosystems Engineering and Environmental Science



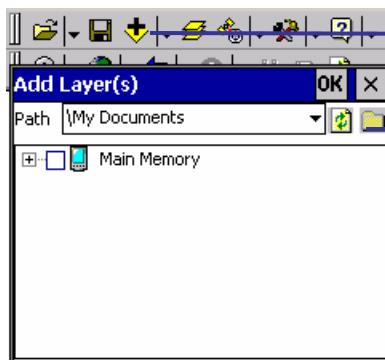
BEES 106

A map is the fundamental component you work with in ArcPad. Geographic information is displayed on a map as layers. Each layer represents a particular type of feature, such as aerial photos, topo maps,

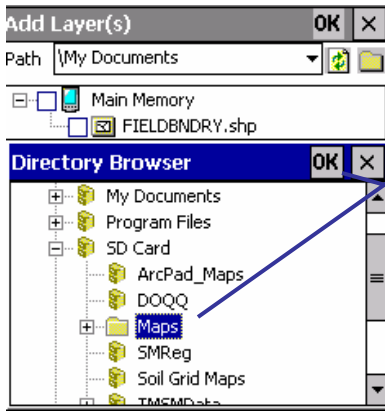
soil survey maps, yield maps, rivers, streams, roads, etc. A layer does not store the actual geographic data; instead, it references the data contained in shapefiles or other georeferenced images.



1. Tap the dropdown arrow to the right of the Open Map button on the Main toolbar.
2. Tap New Map from the dropdown list. ArcPad will open a new blank map. If you have another map open, ArcPad will ask if you would like to save any changes from the map that is currently open.

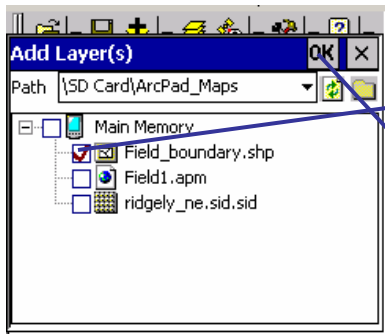


3. Tap the Add Layer(s) button on the Main toolbar.
4. Tap the Folder to navigate to the directory that you want to get data from. The Directory Browser box will appear on the screen.



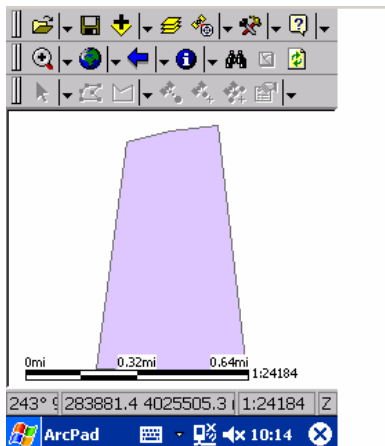
5. Tap the folder in the Directory Browser dialogue box that contains the layers that you want to add to your map, for example the ArcPad Maps folder on your SD Card

6. Tap OK



7. In the Add Layer(s) dialogue box, tap inside the box next to the layer data files you want to add to your map. The Add Layer(s) Dialogue box only displays the layer data files that are supported by ArcPad. A red check mark indicates the layer data file has been selected.

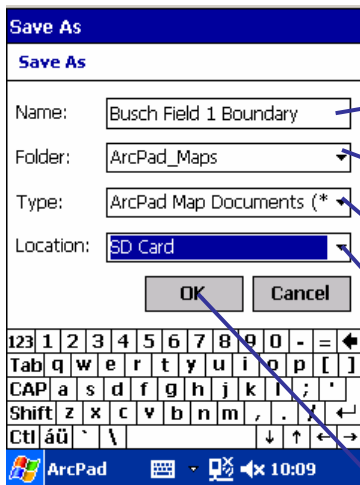
8. Tap OK.



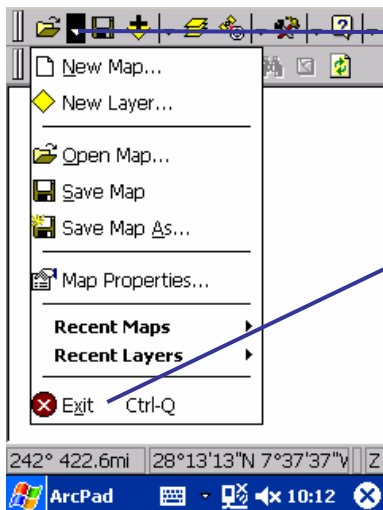
9. Your layer data file(s) are now added to your new map and will appear on your screen.



10. To save your map, tap the Save Map button on the Main toolbar. The Save As dialog box appears on the screen.



11. Using the stylus and the provided keyboard, type a name for the map; for example, Busch Field 1 Boundary.
12. Tap the Folder dropdown arrow to navigate to the folder where you would like to save the map file; for example, ArcPad Maps.
13. Tap the Type dropdown arrow to select the ArcPad Map Documents file format.
14. Tap the Location dropdown arrow to navigate to the location of the Folder you are saving the map; for example, SD Card.
15. Tap OK. The map has been saved.



16. To exist ArcPad, tap the arrow to the right of the Open button on the Main toolbar to display the dropdown list.
17. Tap Exit to close ArcPad.

E12-4315-00-001-05